

NEW



# Gold Series (AU-DC) Air Handlers

## Rust-Free, Anti-Slosh Drain Pan With Quick & Easy Installation



Gold AU12DCZ 12,000 BTU/hr 230V/50-60Hz chilled water air handler shown

Gold Series air handlers, recipient of an Honorable Mention at the 2012 International Boatbuilders Exhibition and Conference (IBEX), incorporate many innovative features, including an optional Breathe Easy™ air purifier and rust-free composite drain pan. AU-DC models feature ultra-quiet "WhisperCool" DC blowers that are strong enough to overcome high-static-pressure duct.

The composite drain pan quickly removes condensate water. Each drain hole is reinforced and has an external stop to prevent over tightening of the screw-in hose barb. Straight or 90-degree hose barbs may be used to better accommodate a variety of installation situations. Vibration-isolation mounting hardware can be attached at a variety of locations along the perimeter of the drain pan.

The rotatable blower ring can be positioned easily in the field by adjusting a single screw, and can even blow directly downward (best achieved with the right-oriented version). The blower inlet adapter is made of a high-temperature resin to easily withstand the heat generated by the optional internal electric heating element. The manual heater-overload safety switch is easily accessible without disassembling the unit.

The optional integrated Breathe Easy air purifier is positioned directly in the airstream. Our award-winning Breathe Easy technology eliminates odors and up to 99.9% of VOCs and biological contaminants.

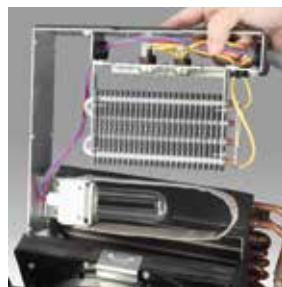
An upgraded Gold series EU package is available. Please see reverse side for details.



The drain pan features anti-slosh, positive-flow condensate channels, reinforced drain holes, and moveable vibration-isolation mounting clips.



The DC blower can be easily rotated in the field by loosening the single adjustment screw (A) on the blower collar; air bleeder hose cradle (B) is also shown.



The assembly for the optional electric heater (top) and Breathe Easy air purifier (bottom) fits between the coil and blower (standard AU model shown).

### Key Benefits

- Rust-free composite drain pan
- Drain pan features anti-slosh, "positive-flow" drain channels for no spills and rapid removal of condensate
- Vibration-isolation mounts reduce noise and vibration
- Improved insulation
- DC "WhisperCool" blowers are extremely quiet yet powerful enough to overcome high-static-pressure duct
- Single adjustment screw for 270° of blower rotation
- Blower can be rotated to straight down position for overhead applications
- Easy access to heater overload reset button
- Flexible mounting options
- Braided, kink-proof air bleeder hose
- Reinforced drain holes prevent overtightening of hose barbs

### Special Options

- Optional EU package upgrades include improved insulation and wire loom, protective cover for water-tube hairpins, and more (see reverse side for details)
- Optional integrated Breathe Easy™ air purifier stops odors and is up to 99.9% effective in neutralizing contaminants in the air you breathe
- Optional electric heat
- Optional flow control automatically balances circulated water throughout the system
- Optional Breathe Easy™ microparticle air filter
- Left-oriented blower models



Specifications for Gold Series (AU-DC) Air Handlers

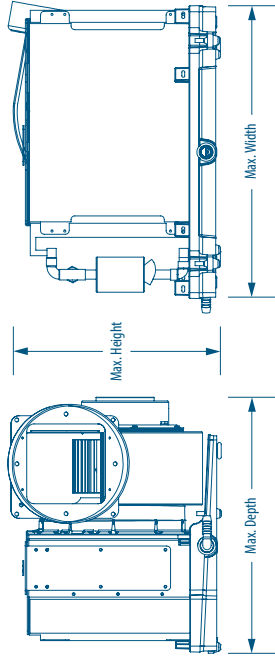
Model <sup>(1)</sup>	AU6DC	AU9DC	AU12DC	AU18DC	AU24DC
Nominal Capacity - Cool (BTU/h)	6000	9000	12000	18000	24000
Voltage @ 50/60Hz 1-Ph (V)	230	230	230	230	230
Full Load Amps (FLA) Cool (A)	1.4	1.4	3.17	3.9	3.86
Full Load Amps (FLA) Heat (A)	5.75	7.92	9.69	17	16.9
Full Load Amps (FLA) Blower (A)	1.4	1.4	3.2	3.9	3.9
Optional Electric Heat (kW)	1	1	1.5	3	3
Heater Element Quantity	1	1	2	2	2
Max. Circuit Breaker (A)	10	10	15	20	20
Min. Circuit Ampacity (A)	7	9	11	18	18
Water Flow (gpm/lpm)	1.5/5.7	2.25/8.6	3/11.4	4.5/17.1	6/22.8
Air Flow (cfm/m <sup>3</sup> h)	200/340	300/510	400/680	600/1020	700/1190
External Static Pressure	2.9/722.1	2.8/697.2	2.6/647.4	2.1/522.9	1.4/348.6
Chilled Water Pressure Drop (PSI)	1.1	4.4	8	4.6	11
Max. Height (in/mm) <sup>(2)</sup>	11.7/298	13.4/341	13.4/341	14.4/366	15.5/394
Max. Width (in/mm) <sup>(2)</sup>	14.4/366	16.4/417	16.4/417	19.9/506	22.4/569
Max. Depth (in/mm) <sup>(2)</sup>	14/356	14/356	16.7/425	17.3/440	17.3/440
Drain Connection Size (in)	½	½	½	½	½
Drain Connection Type	PPT	PPT	PPT	PPT	PPT
Chilled Water Connection Size (in)	½	½	½	½	½
Chilled Water Connection Type	PPT	PPT	PPT	PPT	PPT
Min. Supply Duct Size (in/mm)	5/127	6/153	6/153	7/178	8/204
Min. Supply Air Grille Size (sq in/sq cm)	35/226	49/317	70/452	100/646	140/904
Min. Return Air Grille Size (sq in/sq cm)	70/452	98/633	130/839	200/1291	240/1549
Net Weight (lbs/kg) <sup>(3)</sup>	24/10.9	26.5/12.1	33.25/15.1	42/19.1	46/20.9
Gross Weight (lbs/kg)	31/14.1	35/15.9	42/19.1	54/24.5	58/26.4

<sup>1</sup> Model numbers shown are for 115V units with brushless "WhisperCool" (DC) blowers. Add a "Z" for 230V units; add "-FC" for optional flow control; add "-L", "-or", "-R", for valve position (relative to the coil) and angle of the blower; add "\_ kW" for amount of optional electric heat in kilowatts (for ex. 1.5kW). See DWG H305002 for a visual explanation of valve orientation and blower angle.

<sup>2</sup> All dimensions ± 0.30 in. (8 mm).

<sup>3</sup> Without electric heat option, subtract 3 lbs. (1.4 kg) from unit weight for each heater element.

Dimensions



About the EU Package

The EU Package includes several upgrades for reduced installation time and an improved appearance.

A plastic cover (A) protects the exposed water-tube hairpins. Electrical connections use quick plugs (B) so there are no wires to connect, and upgraded wire loom (C) is used for better aesthetics. A new durable bleeder assembly with cradle (D) gives easy access and speeds the air bleeding process.

A capacitor, protected under a plastic housing (E), replaces the electrical box. In addition, a slave box can be used to control multiple air handlers from a single cabing control, all with plug-in connections. The plumbing connections (F) are shorter so the installation takes up less space.



Key Benefits

- Quick-plug electrical connections
- Upgraded wire loop for improved appearance
- Less space needed for plumbing connections
- Easy access to bleeder assembly

DOMETIC MARINE DIVISION

2000 N. Andrews Ave. Ex. | Pompano Beach, FL 33069 USA | Tel. 954-973-2477 | Fax: 954-979-4414  
 www.Dometic.com/Marine | MarineSales@DometicUSA.com

24/7 TECH SUPPORT FOR UNITED STATES & CANADA:

8:00 AM to 5:00 PM Eastern Time: 800-542-2477  
 After hours and weekends: 888-440-4494

INTERNATIONAL SALES & SERVICES

Europe & the Middle East: Call +44(0)870-330-6101  
 For all other areas visit our website to find your nearest distributor.

L-3261 Rev. 2014/09/12

Specifications and availability subject to change without notice.

